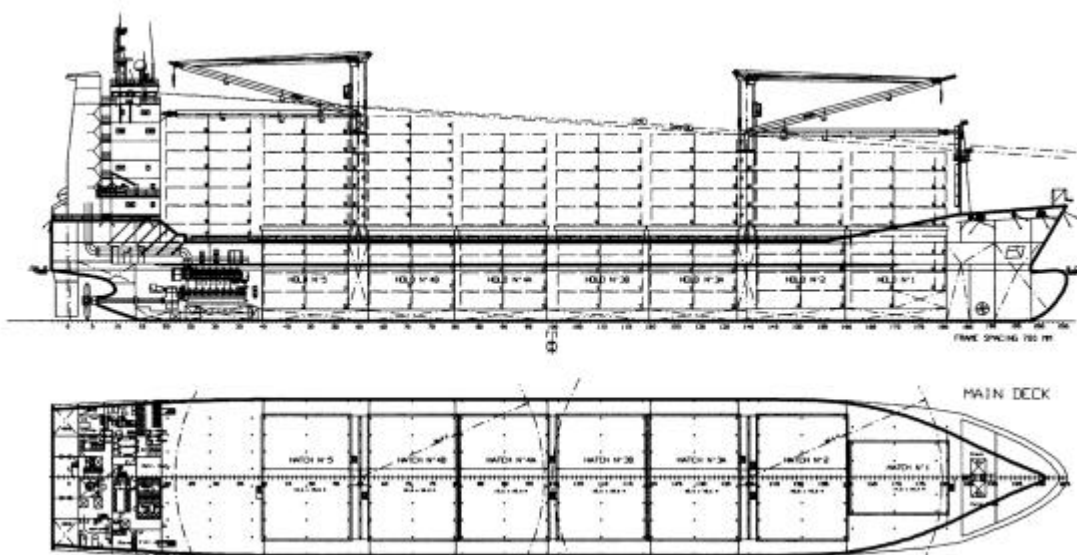


THOMAS G. ERNST & CO.

GMBH
SCHIFFSMAKLER

1100 TEU Fast Container Vessel

Type « CS-1100 plus » (proved design)



Type

Cellular geared Container Vessel

Deadweight

abt 13.760 tdw on abt 8,50 m freeboard draft
abt 10.400 tdw on abt 7,30 m design draft

Class

GL ✕ 100 A5 E "Containership"
SOLAS II-2 Reg 54
Equipped for Carriage of Containers and
strengthened for heavy cargo up to 12t/m²
✕ MC E AUT

Builder

1st Class Shipyard People's Republic China

Dimensions

Length over all	148.00 m
Length between perpendiculars	140.30 m
Beam	23,25 m
Depth	11.50 m

<u>Container Capacity (IMO)</u>	TEU	FEU
in Hold	334	164
on Deck	<u>784</u>	<u>362</u>
Total	1118	526

TEU of 14 ts hmg weight 700 units

Reefer Plugs 220 where of 80 in holds

<i>max. Stackloads</i>	TEU/FEU
Deck	50ts/80ts
Hold	120ts/150ts

Hold Capacities

Cargo Holds abt 16,150 m³

Cranes

2 x Cranes, 40 ts SWL max outreach 26,8
m/28 m installed midships

Main Engine

Maker	MAN B&W 7L 58/64
Power	9730 kw at 428 rpm

Generators

3 Diesel generators of 650 kw each
1 Emergency Diesel Generator of 250 kw
1 shaft Generator of 1750 kva

Service Speed

abt 19,9 knots Service Speed at abt. 42,5 ts
6" IFO 380 at 7.3 m draught, at 90% MCR,
8'6" vessel is able to do 20 kn

Bowthruster	700 kw
-------------	--------

all details given in good faith but without guarantee

Thomas G. Ernst + Co GMBH, Grosse Elbstr. 42, 22767 Hamburg-Altona
Phone +49/40/319 60 91 – Fax +49/40/319 53 13 – email Ernst.co@seanet.de
www.seanet.de