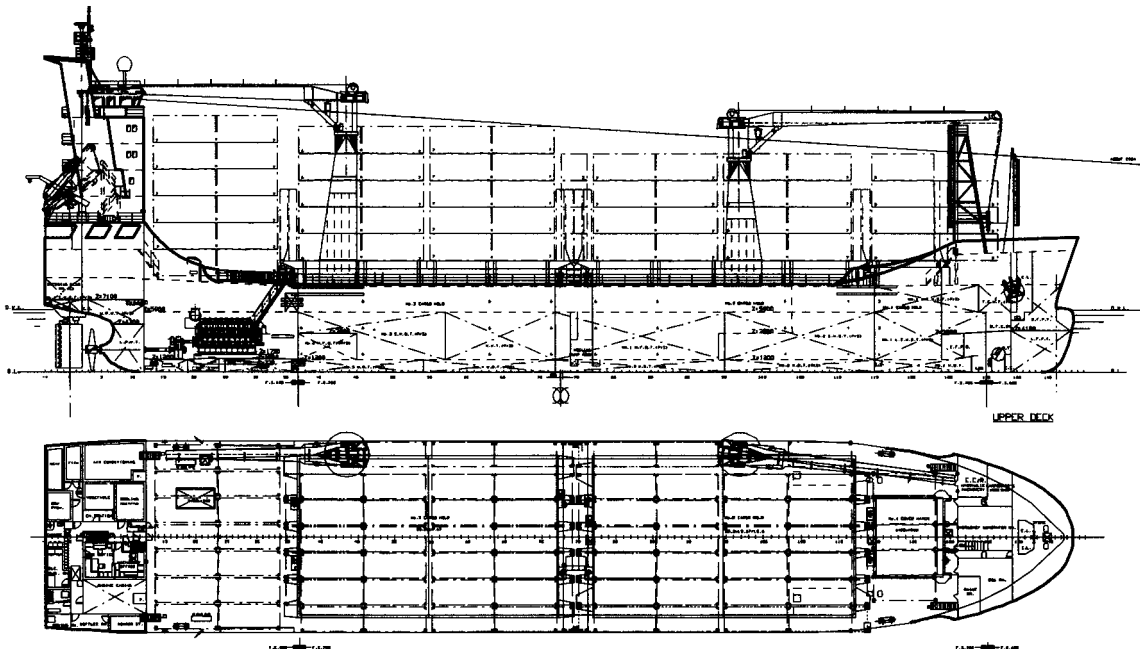


THOMAS G. ERNST & CO.

GMBH
SCHIFFSMAKLER

502 TEU Container Feeder Vessel



Type

Cellular geared Container Vessel

max. Stackloads

Deck
Tanktop

TEU/FEU

36ts/50ts
72ts/105ts

Deadweight

abt 5.400 tdw on abt 6,50 m scantling draft

Hold Capacities

grain / bale

7,054 cbm / 7,000 cbm

Class

GL ✕ 100 A5 E G SOLAS II-2 Reg 54

Equipped for Carriage of Containers and dangerous goods

✕ MC E AUT

Cranes

2 x Cranes, 40 ts SWL, min/ max outreach
2.20m/ 24.80m installed starboard

Builder

Experienced Shipyard People's Republic
China

Main Engine

Maker MAN 9L32/40 alternatively Mak
Power 3960 kw at 750 m

Dimensions

Length over all	100.60 m
Length between perpendiculars	95.80 m
Beam	18.80 m
Depth	8.40 m

Generators

2 Diesel generators MAN Holeby each 570
kw
1 Emergency Diesel Generator of 200 kw
1 shaft Generator of 712 kva

Container Capacity (IMO)

	TEU	FEU
in Hold	141	64 + 13
on Deck	<u>367</u>	<u>170 + 27</u>
Total	508	234 + 40

100% One fuel system !

TEU of 14 ts hmg weigth 275 units

Reefer Plugs 75 units

Service Speed

abt 15,2 knots Service Speed at abt. 16.0 mt
IFO 380

Bowthruster

500 kw

all details given in good faith but without guarantee

Thomas G. Ernst + Co GMBH, Grosse Elbstr. 42, 22767 Hamburg-Altona
Phone +49/40/319 60 91 – Fax +49/40/319 53 13 – email Ernst.co@seanet.de
www.seanet.de