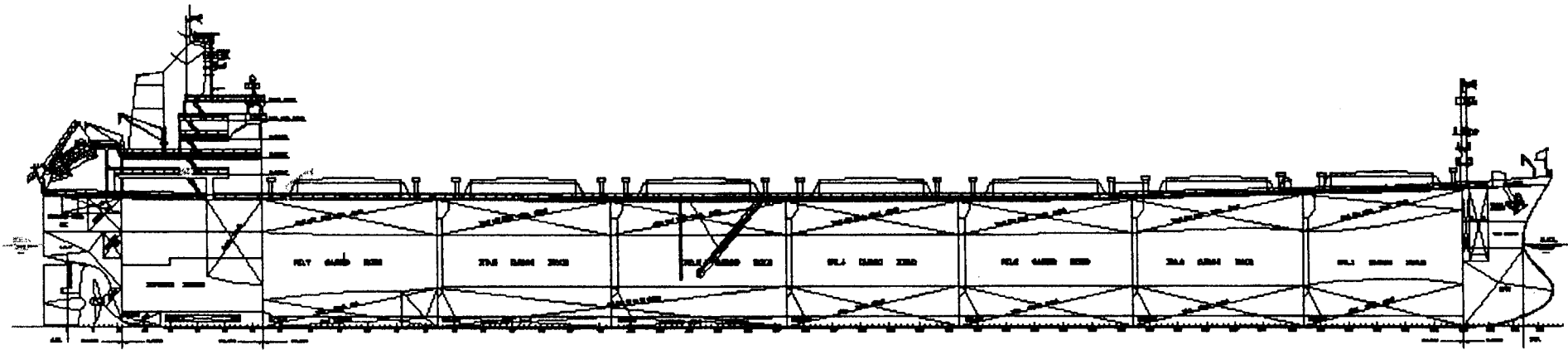


74000 DWT BULK CARRIER



Main Particulars

Length Overall	abt. 225.00 m
Length btw perp.	217.00 m
Breadth, mld	32.26 m
Depth, mld	19.20 m
Designed draft, mld (at mid.)	12.50 m
Scantling draft, mld	14.00 m
Deadweight at scantling draft	abt. 74000 mt

Speed at 14.00 m draught with CSO of main engine, 15% sea margin: abt. 14.4 knots

Consumption HFO (at CSO, 42700 kJ/kg) abt. 37.10 t/day +5%

Bunkering range (at 14.4 knots) abt. 23000 n.miles

Classification

ABS + A1 (E) Bulk and Ore Carrier Safe Hull (hold No.2, 4 and 6 may be empty / No.4 may be ballast hold) + AMS + ACCU. Or other Class equivalent.

Complement Total 30 persons

Capacities

Cargo holds (grain):	abt. 90,000 m ³
Ballast water tanks (incl. No.4 hold)	abt. 32,000 m ³
Heavy fuel oil:	abt. 2,500 m ³

Diesel oil:	abt. 110 m ³
Fresh water:	abt. 350 m ³

Cargo Equipment

- 7 Cargo hatch openings: No.1 - abt. 15.48(L) x 13.20(B) m, No.2 - No.7 abt. 15.48(L) x 15.00(B) m.
- Hatch covers of side rolling type (elec-hydr. type).

Main Engine

Type	MAN B&W 5S60MC Mark VI
MCR	10200 kW x 105 r/min
CSO	9198.5 kW x 101.4 r/min

Electric Generating Plant

- 3 main diesel generators, each abt. 600 kW
- 1 emergency generator, abt. 100 kW

Ship's equipment

- 1 elec. - hyd. steering gear
- 2 windlass, elec-hyd. driven with one gypsy wheel, two drums and one warping head
- 2 mooring winches, elec-dyd. driven with two drums and one warping head
- 2 mooring winches, elec-dyd. Driven with one drum and one warping head
- 1 elec-hyd. driven crane of SWL 4 mt for 2m extension beyond beam moulded